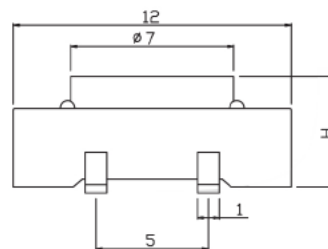
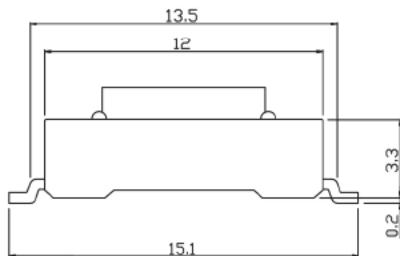
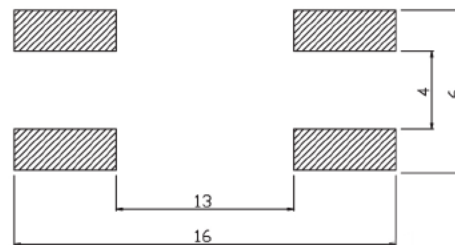
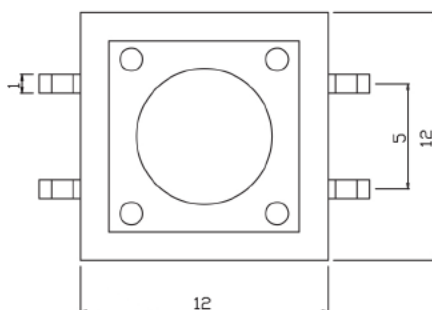


Specifications

Rating:	50mA 12VDC
Contact Resistance:	50mΩ Max
Insulation Resistance:	100MΩ Min
Dielectric Strength:	250VAC 1 minute
Operating Temperature:	-20°C to +70°C
Electrical Life:	100,000+ Cycles
Operating Force:	180gf



H1=4.3mm
H2=5.0mm
H3=7.0mm
H4=7.5mm



PCB LAYOUT

Description	Ref Code
12x12x4.3mm SMT Momentary PCB Tactile Switch	483118