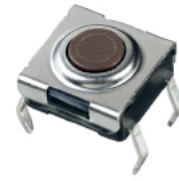


PHAP5-31 series

Tact switches • 6 x 6 mm low profile package



DISTINCTIVE FEATURES

- Compact size
- Positive tactile feed back
- Washable



ENVIRONMENTAL SPECIFICATIONS

- Operating Temperature: -25 °C to +70 °C (-13 °F to +158 °F)
- Storage Temperature: -30 °C to +80 °C (-22 °F to +176 °F)



ELECTRICAL SPECIFICATIONS

- Contact rating: 50 mA 12 VDC
- Contact Resistance: 100 mΩ max.
- Insulation Resistance: 100 MΩ min. at 500 VDC
- Dielectric Strength: 250 VAC / 1 minute



MECHANICAL SPECIFICATIONS

- Operating force: 160 g ±50 g, 260 g ±70 g
- Mechanical life: 100,000 cycles min.
- Travel: 0.25 mm



MATERIALS

- Body: Polyamide
- Contact: Stainless Steel
- Cover: Stainless Steel
- Terminal: Silver plated brass
- Actuator: Polyamide

The company reserves the right to change specifications without notice.



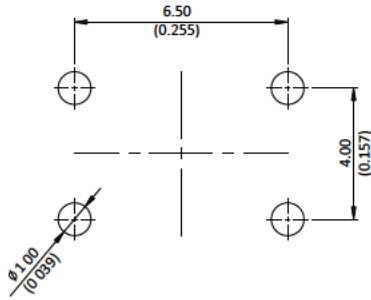
PHAP5-31 series

Tact switches • 6 x 6 mm low profile package

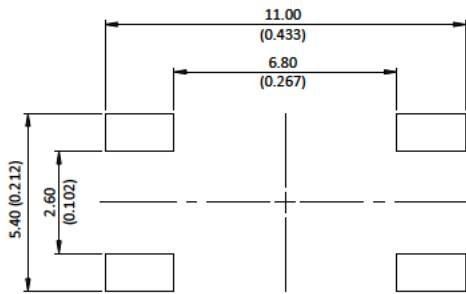


PCB LAYOUT

31V THROUGH-HOLE



31V SURFACE MOUNT



PACKAGING

PART NUMBER	PACKAGING QUANTITY	
	TUBE	TAPE AND REEL
PHAP5-31V**T***	75 pcs	-
PHAP5-31V**S***	75 pcs	2,000 pcs

PHAP5-31 series

Tact switches • 6 x 6 mm low profile package



BUILD YOUR PART NUMBER

PHAP5-

SERIES

31

PACKAGE

31 6 x 6 wash

V

STYLE

V Vertical

A

CONTACT M

A Standard

2N

HEIGHT/LENGTH
(SPECIFIED DIMENSIONS)

2N 3.1 mm

2

FORCE

2 160 g

3 260 g

T

MOUNTING

T Through-hole

S Surface mount

2

GROUNDING

2 Non ground

W

WASHABLE

W Washable

3

PACKAGING

3 Tube

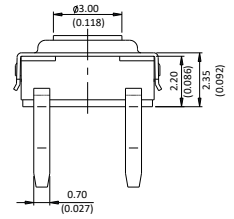
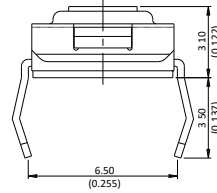
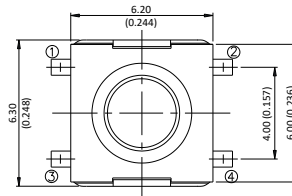
4 Tape and reel

See packaging table for availability

PHAP5-31 series

Tact switches • 6 x 6 mm low profile package

31V: 6 X 6 MM LOW PROFILE - VERTICAL - THROUGH-HOLE



31V: 6 X 6 MM LOW PROFILE - VERTICAL - SURFACE MOUNT

