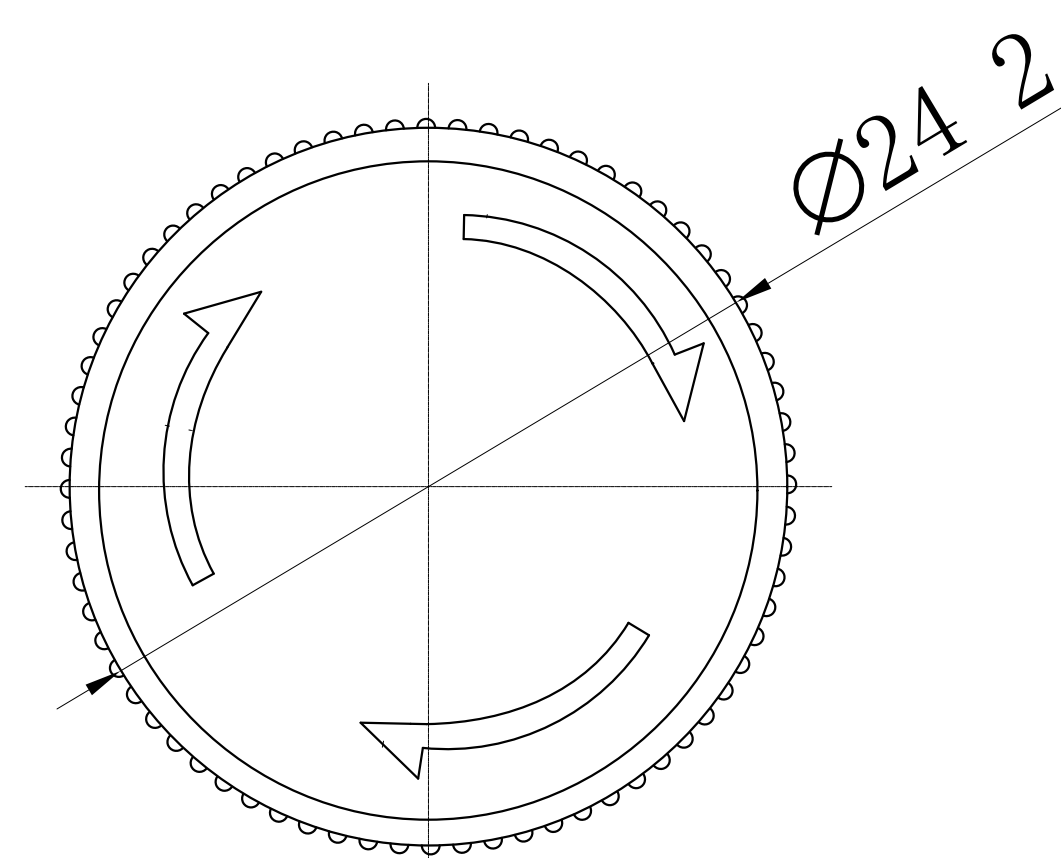
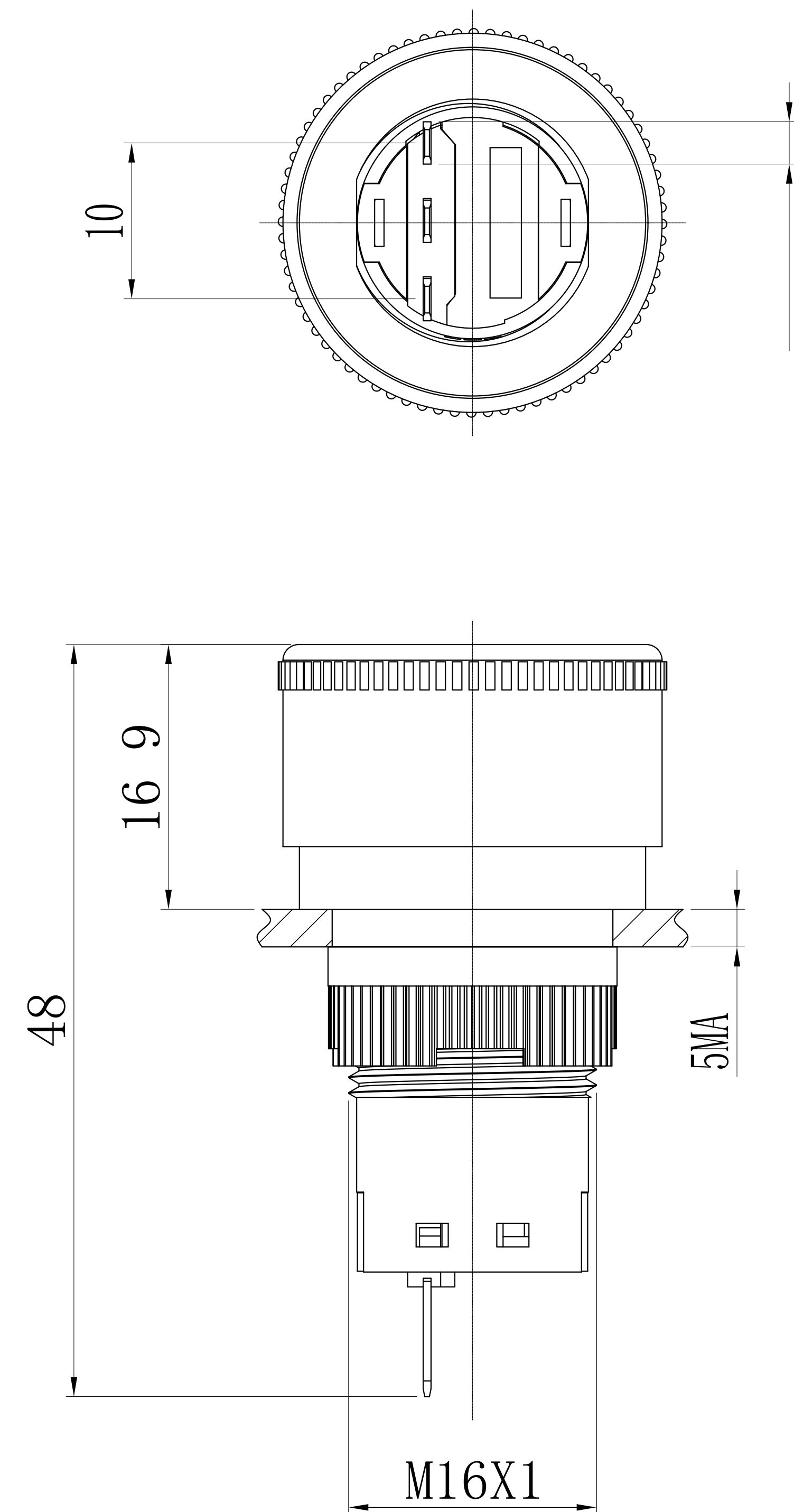
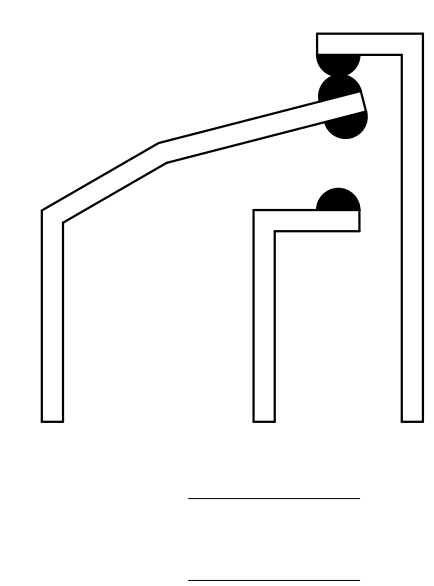


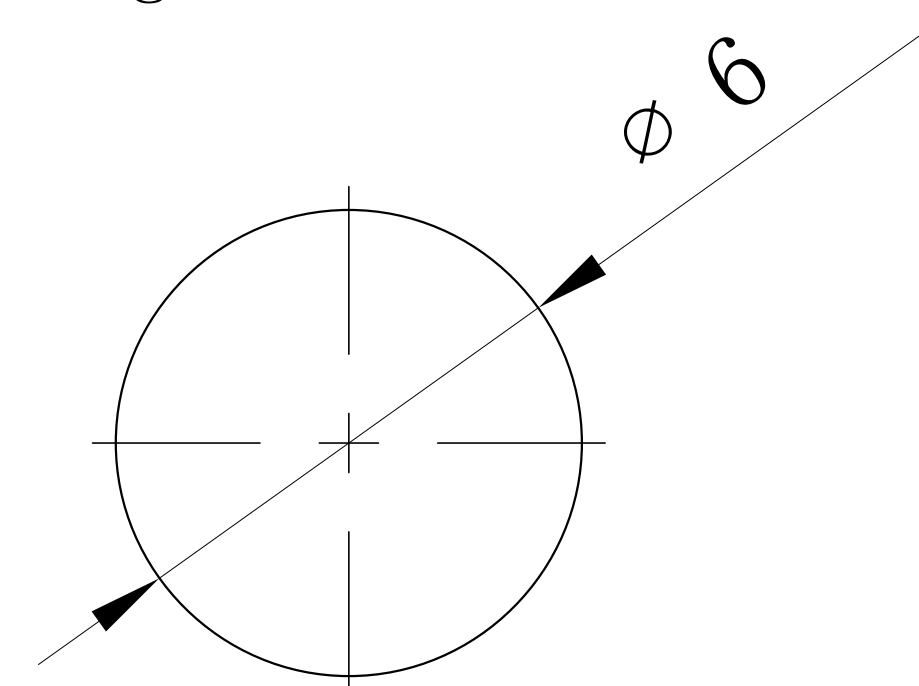
UNIT: mm (毫米)



开关结构说明:
Switch structure description



安装孔尺:
Mounting hole size



性能要求:

- Performance requirements
- 防护等级: I 65
Protection grade I 65
 - 接触电阻: $\leq 50 \Omega$;
Contact resistance $\leq 50 \Omega$
 - 绝缘电阻: $\geq 100 \Omega$;
Insulation resistance $\geq 100 \Omega$
 - 抗电强度: A 2500, 1min, 闪烁、击穿;
Electrical resistance AC25 0V min no flicker and breakdown
 - 寿命: 电气部分在额定 载下动作5 次 异常。
Electrical part operate 50 000 times under rated load with out any abnormality

技术要求:

Technical requirements

- 表面光洁, 平整无毛刺;
The surface is smooth without burr
- 参数/批次字迹清晰, 错位;
Clear handwriting of parameters/batches without any misalignment
- 电 参数: Ith: 5A Ui: 50V;
Electric parameter Ith: 5A Ui: 50V;
Elec ric aram ter A i: 2 0V;
- 工作环境温度: $-30^{\circ}\text{C} \sim +65^{\circ}\text{C}$;
Working environment temperature $-30^{\circ}\text{C} \sim +65^{\circ}\text{C}$;
- 动作形式: 自锁式;
Operation type latching
- 动作行程: 约3 mm;
Move ent stroke about 3 mm
- 连接形式: 配套接插件/焊接导线;
Connection form Matching connector /Welding wire
- 拧紧力矩 约0.4 m
Tightening torque about 0.4 Nm
- 开关组合: 1N01 C
Contact configuration 1N 1NC
- 外观材料: 按键: C
外壳: A 6;
底座: BT
触点: 银 金
Appearance material Button surface C
Housing A6 ;
Base BT
Contact silver alloy

1 未标注公差按照GB/T 18 4-m级。

Unmarked tolerance shall be in accordance with GB/T 18 4-m class

描 图

描 校

底

装 订 号

标记	处数	更改文件号	签字	日期	M16 plastic emergency stop button switch M16塑料急停按钮开关
制图	审核	比例	会签	日期	
		1:1			图号 DWG 0):
单重		页码	第1页 共1页(1/1)		HBS1- GQ16F-11T G/J/ C/