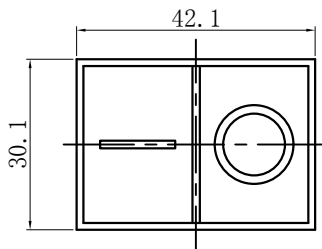
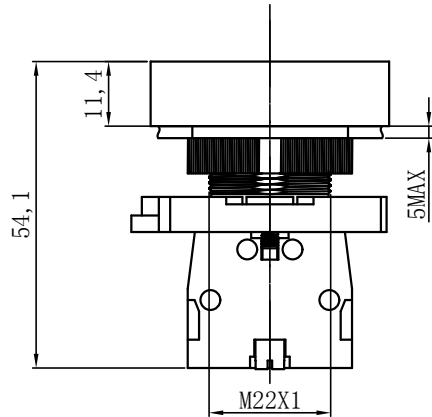
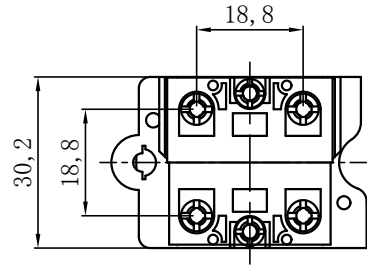
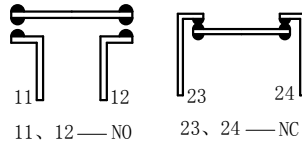


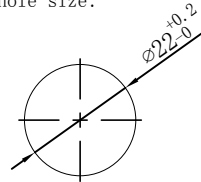
UNIT: mm (毫米)



开关结构说明:
Switch structure description:



安装孔尺寸:
Mounting hole size:



性能要求:

Performance requirements:

1. 接触电阻: $\leq 50\text{m}\Omega$;
Contact resistance: $\leq 50\text{m}\Omega$.
2. 绝缘电阻: $\geq 100\text{M}\Omega$;
The insulation resistance: $\geq 100\text{M}\Omega$.
3. 抗电强度: AC2500V, 1min, 无闪烁、击穿;
Electrical resistance: AC2500V, 1min, no flicker and breakdown;
4. 寿命: 电气部分在额定负载下动作5万次无异常。
Life: Electrical part: operate 50,000 times under rated load without any abnormality.
机械部分: 动作100万次无异常;
Mechanical part: no abnormal movement for 1000,000times.

技术要求:

Technical requirements:

1. 表面光洁, 平整无毛刺;
The surface is smooth without burr;
2. 参数/批次字迹清晰, 无错位;
Clear handwriting of parameters/batches without any dislocation;
3. 电气参数: Ith: 10A Ui: 400V;
Electric parameter: 10A Ui: 400V;
4. 工作环境温度: $-25^{\circ}\text{C} \sim +65^{\circ}\text{C}$;
Working environment temperature: $-25^{\circ}\text{C} \sim +65^{\circ}\text{C}$;
5. 动作形式: 自复式;
Operation type: Momentary
6. 动作行程: 约4mm;
Movement stroke: about 4mm;
7. 连接形式: 导线;
Connection form: wire;
8. 拧紧力矩: 约0.6Nm;
Tightening torque: about 0.6Nm;
9. 开关组合: 1NO1NC;
Contact configuration: 1NO1NC;
10. 未标注公差按照GB/T 1804-m级。
Unmarked tolerance shall be in accordance with GB/T 1804-m class.

描 图

描 校

底 图 号

装 订 号

标 记		处 数	更改文件号	签 字	日 期	名称(TITLE): M22 Metal button switch
DR. 制 图	APPD. 审 核	SCALE. 比 例	countersign. 会 签	Date. 日 期		M22金属按钮开关
		0.8:1		2022.8.30		图号(DWG NO): HBV5EJ-11S
PW. 单 重		P. 页 码	第1页 共1页(1/1)			